

CATALOG No. 1906
 Presented to Mr. Smith May 23 1925 - from whom it was obtained.

MORLEY BROTHERS

1233

Wedgeway

GLASS BAKING WARE

PYREX.

Pyrex is the most Lasting Ware Made. It Never Chips, Flakes or Crazes even after Years of use. It cannot Rust, Burn Out or Discolor and always stays new. It is easy to keep Clean, therefore Sanitary and is Durable, therefore Economical.

Pyrex is the highest scientific development in ovenware and has the remarkable quality of quickly absorbing and retaining heat, causing foods to bake quickly and thoroughly.

Pyrex is ready for immediate service and may be used for any foods baked in the oven—pies, bread, cakes, custards, puddings or au gratin dishes, etc. It never chips, dents, bends, flakes or crazes.

Pyrex solves the problem of serving foods direct from the dish in which you bake it, yet with irreproachable distinction.

Pyrex is easy to wash, easy to keep clean, for nothing can adhere to the hard grease-proof and odor-proof surface of this durable baking ware.

Pyrex helps save food because it bakes quicker than other wares, does not burn food but makes it more delicious, and is guaranteed not to break while in oven use.

CASSEROLES.



Round, Shallow, with Cover

No.	112	113
Capacity, Quarts ...	1	1½
Diameter, Inches ...	7¾	8¼
Depth, Inches ...	2¼	2¼
Dozen in Case.....	2½	2
Weight Case, Lbs....	100	105
Each	\$1.50	1.75

One in a Carton.



Round, with Cover.

Will Fit all Standard Mountings.				
Nos.	167	168	169	170
Capacity, Qts.	1	1½	2	2½
Diam. In. ...	7¼	8¼	9¼	9¾
Depth, In. ...	2⅝	2⅞	3¼	3¼
Doz. in Case.....	2½	2	1½	1
Wt. Case, Lbs....	100	102	98	90
Each	\$1.50	1.75	2.00	2.50

One in a Carton.



Round, with Victor Cover.

Will Fit all Standard Mountings.				
Nos.	267	268	269	270
Capacity, Qts.	1	1½	2	2½
Diam. In. ...	7¼	8¼	9¼	9¾
Depth, In. ...	2⅝	2⅞	3¼	3¼
Doz. in Case.....	2½	2	1½	1
Wt. Case, Lbs....	100	105	100	95
Each	\$1.50	1.75	2.00	2.50

One in a Carton.



Round, with Cover.

Nos.	104	103	102	101	100
Capacity, Qts.	½	1	1½	2	2½
Diameter, Inches ...	6¾	7¼	8½	9	9¾
Depth, Inches ...	2¼	2½	2⅞	3¼	3½
Dozen in Case.....	4	2½	2	1½	1
Weight Case, Lbs....	99	102	104	91	84
Each	\$1.00	1.50	1.75	2.00	2.50

One in a Carton.



Oval, with Cover.

Will Fit all Standard Mountings.				
Nos.	193	197	194	190
Capacity, Qts.	1	1½	2	3
Length, Inches ...	8¾	8¾	9½	10½
Width, Inches ...	6¼	6¼	7	8
Depth, Inches ...	2⅞	3⅞	3¾	4½
Dozen in Case.....	2½	2	1¾	1½
Weight Case, Lbs....	105	96	100	90
Each	\$1.50	1.75	2.00	3.00

One in a Carton.



Oval, with Victor Cover.
 Will Fit all Standard Mountings.

Nos.	293	297	294	290
Capacity, Qts.	1	1½	2	3
Length, In.	8¾	8¾	9½	10½
Width, In.	6¼	6¼	7	8
Depth, In.	2⅞	3⅞	3¾	4½
Doz. in Case.....	2½	2	1¾	1½
Wt. Case, Lbs....	108	100	100	110
Each	\$1.50	1.75	2.00	3.00

One in a Carton.



Oval, Shallow (Beefsteak), with Cover.
 Will Fit all Standard Mountings.

Nos.	183	184	185
Capacity, Qts....	1	1½	2
Length, In.	9	10⅞	12
Width, In.	6½	7¾	8¾
Depth, In.	2⅞	2⅞	2½
Doz. in Case...	2½	1⅞	1⅞
Wt. Case, Lbs....	106	103	104
Each	\$1.50	1.75	2.00

One in a Carton.



Oval, Shallow, (Beefsteak), with Victor Cover.
 Will Fit all Standard Mountings.

Nos.	283	284	285
Capacity, Qts....	1	1½	2
Length, In.	9	10⅞	12
Width, In.	6½	7¾	8¾
Depth, In.	2⅞	2⅞	2½
Doz. in Case...	2½	1⅞	1⅞
Wt. Case, Lbs....	110	105	105
Each	\$1.50	1.75	2.00

One in a Carton.

Note—Capacity Given in Trade Capacity; Measurements are Over All Outside.



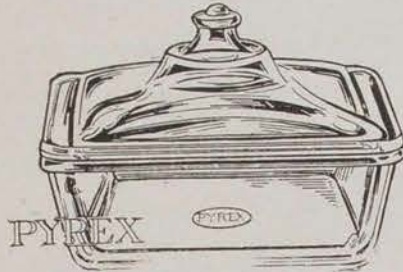
MORLEY BROTHERS

GLASS BAKING WARE

"PYREX."

Sanitary, Easy to Clean, Economical, Durable, Bakes Faster and Better, Bake and Serve in the Same Dish.

SQUARE CASSEROLES.



With Cover.

No. 800—Capacity 1½ Quarts; 8¼ inch Top, 3 inches Deep;
2½ Dozen in a Case; Weight Per Case 130 Lbs.....\$2.25
One in a Carton.

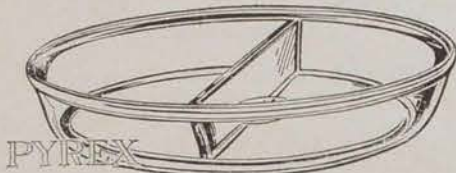
INDIVIDUAL CASSEROLES.



Round, with Cover.

No. 164—Capacity 8 Oz.; 4½ inch Diameter, 2 inches Deep;
7 Dozen in a Case; Weight Per Case 105 Lbs.....\$0.70
One in a Carton.

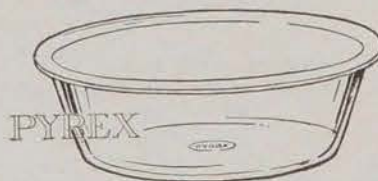
VEGETABLE DISHES.



Round, Double Compartment.

No. 130
Diameter, Inches.....9¾
Depth, Inches.....1⅞
Dozen in Case.....2
Weight Case, Lbs.....94
Each.....\$1.50
One in a Carton.

BAKING DISHES.



Round, Standard.

Nos.	463	464	465
Capacity, Qts.	½	1	1½
Diameter, In.	5⅞	7¼	8¼
Depth, In.	2¼	2½	2¾
Doz. in Case	5	3	2½
Wt. Case, Lbs.	100	86	92
Each	\$0.60	.85	1.00

One in a Carton.

BAKING DISHES.



Oval, Shallow.

Nos.	400	401
Capacity, Oz.	9	10
Diameter, In.	6¼ x 4½	6⅝ x 4⅞
Depth, Inches	1⅝	1½
Dozen in Case	18	16
Wt. Case, Lbs.	140	147
Each	\$0.40	.45

Nos.	402	403
Capacity, Oz.	12½	18½
Diameter, In.	7¼ x 5¼	8½ x 6
Depth, Inches	1½	1⅝
Dozen in Case	14	9
Wt. Case, Lbs.	154	136
Each	\$0.55	.60

Six in a Carton.

COVERED BAKING DISHES.



Oval, with Cover.

No. 110
Diameter, Inches.....10x7⅝
Depth, Inches.....2⅞
Dozen in Case.....2
Weight Case, Lbs.....112
Each.....\$2.00
One in a Carton.

Round, Shallow.

Nos.	132	155
Capacity, Qts.	1	1½
Diameter, In.	7⅞	8¼
Depth, In.	2¼	2½
Dozen in Case	3	2½
Weight Case, Lbs.	93	95
Each	\$0.85	1.00

One in a Carton.

Oval, Shallow.

Nos.	183-B	184-B	185-B
Capacity, Qts.	1	1½	2
Length, In.	9	10⅝	12
Width, In.	6½	7¾	8¾
Depth, In.	2⅝	2¾	2½
Dozen in Case	3	2 5/12	1⅝
Wt. Case, Lbs.	106	103	105
Each	\$0.85	1.00	1.20

One in a Carton.

BAKING DISHES.



Round, Deep.

Nos.	124	123	122
Capacity, Qts.	½	1	1½
Diameter, In.	6⅞	7¼	8½
Depth, In.	2¼	2½	2⅞
Doz. in Case	5	3	2½
Wt. Case, Lbs.	93	80	91
Each	\$0.60	.85	1.00

Nos.	121	120
Capacity, Qts.	2	2½
Diameter, In.	9	9¾
Depth, In.	3¼	3½
Dozen in Case	1⅝	1⅝
Wt. Case, Lbs.	83	90
Each	\$1.20	1.40

One in a Carton.

Round, Shallow.

No.	135
Capacity, Quarts	1
Diameter, Inches	8
Depth, Inches	1¾
Dozen in Case	3½
Weight Case, Lbs.	100
Each	\$1.00

One in a Carton.

Oval, Deep.

Nos.	193-B	197-B	194-B	190-B
Capacity, Qts.	1	1½	2	3
Length, In.	8⅝	8⅝	9½	10½
Width, In.	6¼	6¼	7	8
Depth, In.	2⅞	3⅝	3¾	4⅝
Doz. in Case	3	2½	2¼	1½
Wt. Case, Lbs.	92	88	89	90
Each	\$0.85	1.00	1.20	1.75

One in a Carton.

Note—Capacity Given is Trade Capacity; Measurements are Over All Outside.

1000141682



MORLEY BROTHERS

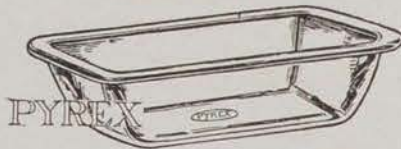
1235

Wedgeway

GLASS BAKING WARE PYREX.

Sanitary, Easy to Clean, Economical, Durable, Bakes Faster and Better; Bake and Serve in the Same Dish.

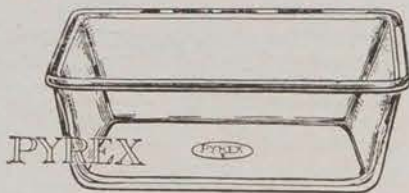
PUDDING DISHES.



Oblong, Wide Flange.

No.	145
Capacity, Quarts	1
Length, Inches	7 3/4
Width, Inches	5 3/4
Depth, Inches	2
Dozen in Case	5
Weight Case, Lbs.	110
Each	\$0.85

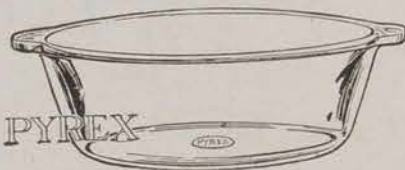
One in a Carton.



Square.

No.	800-B
Capacity, Quarts	1 1/2
Top, Inches	8 1/4 x 8 1/4
Depth, Inches	3
Dozen in Case	3
Weight Case, Lbs.	100
Each	\$1.25

One in a Carton.



Round, Deep, with Handles.

No.	450
Capacity, Quarts	1 1/2
Diameter, Inches	8 1/2
Depth, Inches	2 7/8
Dozen in Case	2 1/2
Weight Case, Lbs.	90
Each	\$1.25

One in a Carton.

BISCUIT PANS.

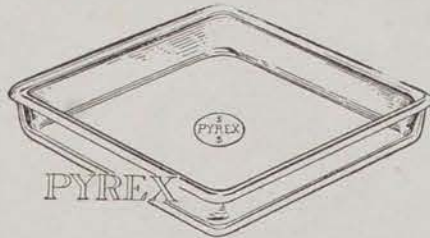


Oblong.

No.	234	235
Length, Inches	9 1/8	11 1/8
Width, Inches	7 5/8	8 5/8
Depth, Inches	1 1/4	1 1/4
Dozen in Case	4	3
Weight Case, Lbs.	128	126
Each	\$0.85	1.25

One in a Carton.

CAKE PANS.



Square.

Nos.	809	810
Top, Inches	9 1/8 x 9 1/8	10 1/8 x 10 1/8
Depth, Inches	1 1/2	1 1/2
Dozen in Case	3	2 1/3
Wt. Case, Lbs.	125	120
Each	\$1.00	1.50

One in a Carton.

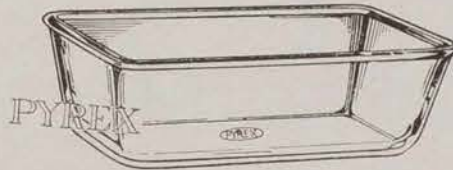


Round, Shallow.

Nos.	220	221
Diameter, Inches	9 3/4	9 1/8
Depth, Inches	1	1 1/4
Dozen in Case	3 1/2	4
Weight Case, Lbs.	116	112
Each	\$0.75	.75

One in a Carton.

BREAD PANS.

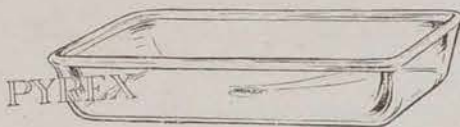


Oblong.

Nos.	212	214
Length, Inches	9 1/8	10 5/8
Width, Inches	5 1/8	5 5/8
Depth, Inches	2 7/8	3 3/8
Dozen in Case	3	2
Weight Case, Lbs.	100	100
Each	\$0.90	1.50

One in a Carton.

UTILITY PANS.

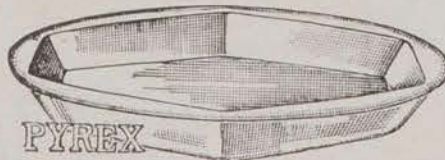


Oblong.

Nos.	231	232
Length, Inches	10 1/2	12 5/8
Width, Inches	6 1/2	8 1/8
Depth, Inches	2	2
Dozen in Case	2 1/2	1 3/4
Weight Case, Lbs.	105	102
Each	\$1.00	1.75

One in a Carton.

PIE PLATES.



Hexagonal.

No. 1203—9 3/4 inch Diameter, 1 1/4 inches Deep; 4 3/4 Dozen in a Case; Wt. Per Case 138 Lbs.	\$1.00
--	--------

One in a Carton.

PIE PLATES.



Round, Narrow Rim.

Nos.	202	203
Diameter, Inches ..	8 3/8	9 3/4
Depth, Inches	1 3/8	1 1/4
Dozen in Case	6	4 3/4
Weight Case, Lbs.	140	135
Each	\$0.75	.90

Three in a Carton.



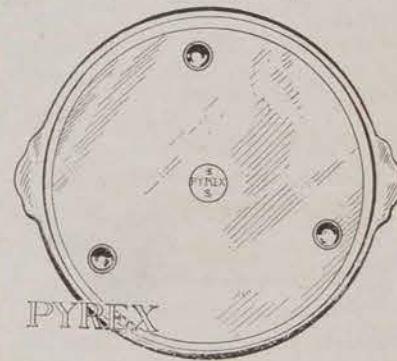
Round, Wide Rim.

Nos.	206	207	208
Diameter, In.	6 1/2	7 1/2	8 1/2
Depth, Inches ..	1 3/8	1 3/8	1 3/8
Dozen in Case ..	6	4 1/2	4
Weight Case, Lbs.	100	95	100
Each	\$0.50	.60	.75

Nos.	209	210	211
Diameter, In.	9 1/2	10 1/2	11 1/2
Depth, Inches ..	1 1/2	1 1/2	1 1/2
Dozen in Case ..	5	2 1/2	2
Wt. Case, Lbs.	148	100	100
Each	\$0.90	1.00	1.10

One in a Carton.

TRAYS, TILES OR COLD MEAT PLATTERS.

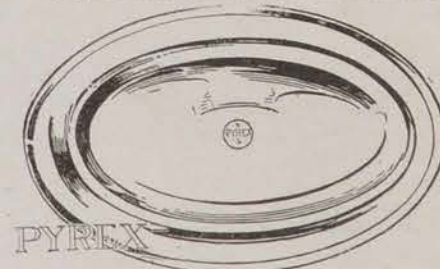


Round, with Handles and Three Feet.

Nos.	706	708	710
Diameter, In.	7	9	11
Depth, Inches ..	3/4	3/4	3/4
Dozen in Case ..	5	3 1/3	4
Wt. Case, Lbs.	60	68	142
Each	\$0.50	.75	1.00

One in a Carton.

FISH OR MEAT PLATTERS.



Oval.

Nos.	313	315
Length, Inches	13 3/4	15 3/4
Width, Inches	8 3/4	10 1/4
Depth, Inches	1 1/4	1 1/4
Dozen in Case	2 1/2	1 3/4
Weight Case, Lbs.	105	105
Each	\$1.50	2.00

One in a Carton.

NOTE—Capacity Given is Trade Capacity; Measurements are Over All Outside.

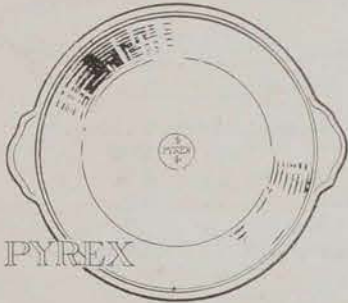
MAY 23, 1925

Wedgeway

GLASS BAKING WARE PYREX.

Sanitary, Easy to Clean, Economical, Durable, Bakes Faster and Better; Bake and Serve in the Same Dish.

ROUND DISHES.



With Handles.

Nos.	302	301
Diameter, Inches	6 7/8	8 1/2
Depth, Inches	1 1/8	1 1/2
Dozen in Case	18	9
Weight Case, Lbs.	180	150
Each	\$0.55	.75

Six in a Carton.

OVAL DISHES.



With Handles.

No.	322
Diameter, Inches	10x6 1/2
Depth, Inches	1 1/2
Dozen in Case	7 1/2
Weight Dozen, Lbs.	124
Each	\$0.85

Six in a Carton.

AU GRATIN DISHES.



Oval, French Pattern, with Handles.

Nos.	330	331	332
Length, Inches	10 3/8	11 1/4	12 1/4
Width, Inches	5 1/4	5 7/8	6 1/2
Depth, Inches	1 3/8	1 1/2	1 1/2
Doz. in Case	4 1/2	3 1/8	2 1/2
Wt. Case, Lbs.	86	88	84
Each	\$0.85	1.00	1.25

One in a Carton.

BEAN POTS.



Round, with Cover.

Nos.	502	504	506
Capacity, Qts.	1/2	1	2
Diameter, In.	5 3/8	6 3/4	7 1/4
Depth, In.	3 1/4	4 1/2	5 3/4
Dozen in Case	5	2 3/4	1 1/8
Wt. Case, Lbs.	112	110	100
Each	\$1.00	1.75	2.50

One in a Carton.

MUSHROOM DISHES.



Round, with Handles and Bell Cover.

Nos.	642	645
Diameter, Inches	6 7/8	8 1/2
Depth, Inches	4 7/8	5 1/8
Dozen in Case	2 1/4	1 1/2
Weight Case, Lbs.	69	75
Each	\$1.00	1.35

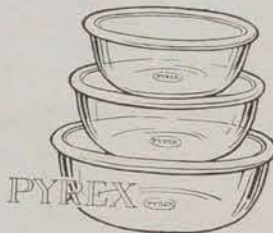
One in a Carton.

BELL COVERS ONLY.

Round.		
Nos.	652	655
Diameter, Inches	4	5
Dozen in Case	3	3
Weight Case, Lbs.	60	60
Each	\$0.45	.60

One in a Carton.

INDIVIDUAL PIE DISHES.



Round.			
Nos.	452	453	455
Capacity, Oz.	6	8	12
Diameter, Inches	4 1/4	4 1/2	5 1/4
Dozen in Case	27 1/2	18	12
Weight Case, Lbs.	149	138	127
Each	\$0.25	.30	.40

Six in a Carton.

INDIVIDUAL BAKERS OR RAMEKINS.



Round, Narrow Rim.

No.	432
Capacity, Oz.	3 1/2
Diameter, Inches	3 1/8
Depth, Inches	1 3/8
Dozen in Case	30
Weight Case, Lbs.	157
Each	\$0.15

Six in a Carton.



Round, Wide Rim.

No.	442
Capacity, Oz.	4
Diameter, Inches	3 3/4
Depth, Inches	1 1/2
Dozen in Case	20
Weight Case, Lbs.	106
Each	\$0.20

Six in a Carton.

CUSTARD CUPS.



Round.

Nos.	423	422
Capacity, Oz.	4	6
Diameter, Inches	3 1/2	4
Depth, Inches	2	2 1/4
Dozen in Case	18	14
Weight Case, Lbs.	96	92
Each	\$0.20	.25

Six in a Carton.



Oval.

No.	427
Capacity, Oz.	5
Diameter, Inches	4 7/8 x 3 1/2
Depth, Inches	1 5/8
Dozen in Case	16
Weight Case, Lbs.	111
Each	\$0.30

Six in a Carton.



Round, French Pattern.

Nos.	424	426
Capacity, Oz.	4	6
Diameter, Inches	3 1/8	3 3/8
Depth, Inches	2 3/8	2 5/8
Dozen in Case	18	15
Weight Case, Lbs.	108	119
Each	\$0.20	.25

Six in a Carton.

PERCOLATOR TOPS.



Round Knob Style; Fits "Universal" and "Royal Rochester" Style Percolators.

No.	954
Inches	2 1/8 x 2 1/8
Dozen in Case	48
Weight Case, Lbs.	148
Each	\$0.20

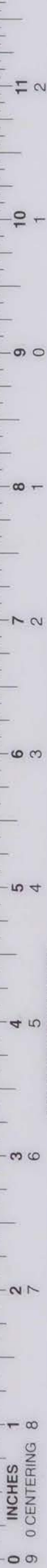


Pyrex Style; Fits "Universal" and "Royal Rochester" Style Percolators.

No.	953
Inches	2 1/8 x 2 1/8
Dozen in Case	48
Weight Case, Lbs.	127
Each	\$0.15

Twenty-Four in a Carton.

Note—Capacity Given in Trade Capacity; Measurements are Over All Outside.

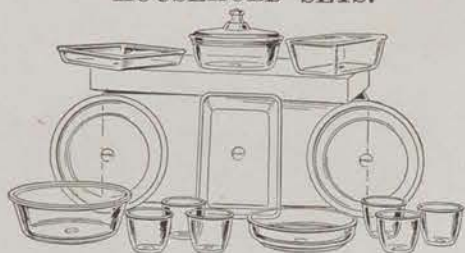


MORLEY BROTHERS

1237

Wedgewood

HOUSEHOLD SETS.



Per Set

No. 10 Set—Consists of 14 Pieces of Plain Pyrex Ware as Enumerated Below and Described on Preceding Pages, Weight per Set 33 Lbs. **\$10.00**

Contents of No. 10 Set.

- 1 Only No. 268, 1½ Qt. Round Casserole.
 - 1 Only No. 231, 10½ x 6½ x 2 inch Utility Pan.
 - 1 Only No. 135, 1 Qt. Baking Dish.
 - 1 Only No. 466, 2 Qt. Baking Dish.
 - 1 Only No. 212, 9¼ x 5¼ x 2¾ inch Bread Pan.
 - 2 Only No. 209, 9½ inch Pie Plates.
 - 1 Only No. 234, 9¼ x 7½ x 1¼ inch Biscuit Pan.
 - 6 Only No. 426, 6 Oz. Custard Cups.
- One Set in a Carton, Six Sets in a Case.

ROUND CASSEROLES.



Solid Brass Perforated Frame, Heavily Nickel Plated. Frames Only—Round.

Nos.	76	86
Size, Inches	7	8
Fits Pyrex Dish, Nos.	167	168
Per Dozen	\$30.00	36.00
With Brown Inset—Round.		
Nos.	76B	86B
Size, Inches	7	8
Capacity, Quarts	1	1½
Each	\$4.00	5.00
With Plain Pyrex Inset—Round.		
Nos.	76PP	86PP
Size, Inches	7	8
Capacity, Quarts	1	1½
Each	\$6.00	7.00
With Engraved Top Pyrex Inset—Round.		
Nos.	76EP	86EP
Size, Inches	7	8
Capacity, Quarts	1	1½
Each	\$7.00	8.00

STEAK CASSEROLES.



Solid Brass Perforated Frame, Heavily Nickel Plated. Frames Only—Oval.

No.	184
Fits Pyrex Dish No.	184
Each	\$3.50
With Pyrex Inset—Oval.	
No.	184P
Capacity, Quarts	1½
Each	\$7.00

GLASS BAKING WARE PYREX. PLAIN GIFT SETS.



Suitable for Weddings, Anniversaries, Birthdays, Showers, in fact any time when a Gift of Distinction is desired.

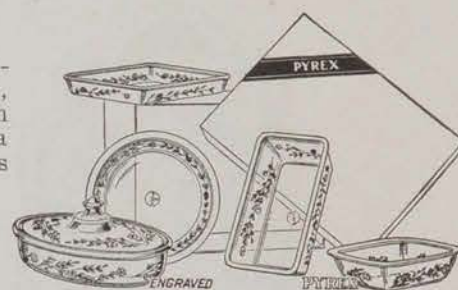
Per Set

No. 5 Set—Consists of 5 Pieces of Plain Pyrex Ware as Enumerated Below and Described on Preceding Pages; Weight per Set 16½ Lbs. **\$5.00**

Contents of No. 5 Set.

- 1 Only No. 284, 1½ Qt. Casserole.
 - 1 Only No. 212, 9¼ x 5¼ x 2¾ inch Bread Pan.
 - 1 Only No. 208, 8½ inch Pie Plate.
 - 1 Only No. 234, 9¼ x 7½ x 1¼ inch Biscuit Pan.
 - 1 Only No. 145, 1½ Qt. Pudding Dish.
- One Set in a Carton, Twelve Sets in a Case.

ENGRAVED GIFT SETS.



Per Set

No. 5-E2 Set—Consists of 5 Pieces of Engraved Pyrex Ware as Enumerated Below, Weight per Set 16½ Lbs. **\$8.00**

Contents of No. 5-E2 Set.

- 1 Only No. 284, 1½ Qt. Casserole.
 - 1 Only No. 212, 9¼ x 5¼ x 2¾ inch Bread Pan.
 - 1 Only No. 208, 8½ inch Pie Plate.
 - 1 Only No. 234, 9¼ x 7½ x 1¼ inch Biscuit Pan.
 - 1 Only No. 145, 1½ Qt. Pudding Dish.
- One Set in a Carton, Twelve Sets in a Case.

OVAL CASSEROLES.



Solid Brass Perforated Frame, Heavily Nickel Plated. Frames Only—Oval.

Nos.	936	946
Size, Inches	8	9
Fits Pyrex Dish, Nos.	193	194
Per Dozen	\$36.00	40.00
With Brown Inset—Oval.		
Nos.	936B	946B
Size, Inches	8	9
Capacity, Quarts	1	2
Each	\$5.00	6.00
With Plain Pyrex Inset—Oval.		
Nos.	936PP	946PP
Size, Inches	8	9
Capacity, Quarts	1	2
Each	\$6.00	7.00
With Engraved Top Pyrex Inset—Oval.		
Nos.	936EP	946EP
Size, Inches	8	9
Capacity, Quarts	1	2
Each	\$7.00	9.00

PIE CASSEROLES.

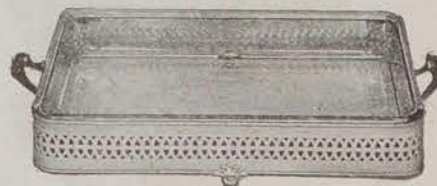


Solid Brass Perforated Frame, Heavily Nickel Plated. Frames Only—Round.

Nos.	1800	1900
Size, Inches	8	9
Fits Pyrex Dish, Nos.	202	203
Per Dozen	\$24.00	30.00
With Pyrex Inset—Round.		
Nos.	1800P	1900P
Size, Inches	8	9
Each	\$4.00	5.00

All Above, One in a Carton.

UTILITY PANS.



Solid Brass Perforated Frame, Heavily Nickel Plated. Frames Only—Oblong.

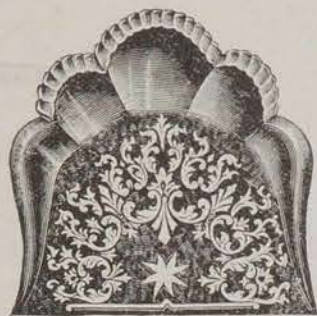
Nos.	231	232
Sizes, Inches	10½	12½
Fits Pyrex Dish, Nos.	231	232
Each	\$3.50	4.00
With Pyrex Inset—Oblong.		
Nos.	231P	232P
Sizes, Inches	10½	12½
Each	\$6.00	7.00

May 23, 1925

MORLEY BROTHERS

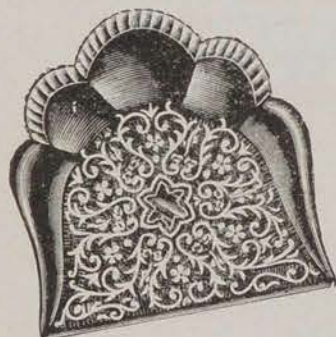


NICKEL PLATED WARE CRUMB TRAYS.



With Scraper.

No. 26—Tin, Nickel Plated, 8 3/4 x 8 1/2 inch Tray, 12 x 2 3/4 inch Scraper, Weight Per Dozen 7 lbs. \$5.00



With Brush.

No. 22—Tin, Nickel Plated, 8 3/4 x 8 1/2 inch Scraper, Brush 12 inches Long, Weight Per Dozen 8 1/2 Lbs. \$12.00



With Brush.

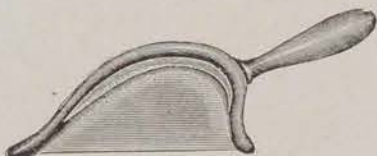
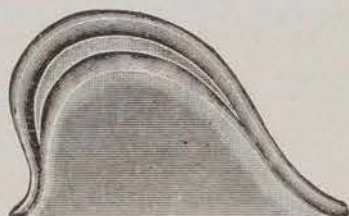
No. 19B—Tin, Nickel Plated, Rubberoid Handles, 8 3/4 x 8 1/2 inch Tray, Brush 12 inches Long, Weight Per Dozen 7 1/2 lbs. . . \$18.00

All Above, One Dozen Sets in a Carton.



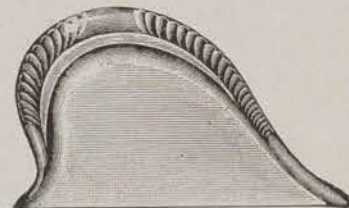
With Scraper.

No. 014—XX Tin, Nickel Plated, Rubberoid Handle on Scraper, 10 x 6 1/4 inch Tray, 12 1/4 x 3 3/4 inch Scraper, Weight Per Dozen 7 lbs. \$9.00
One Dozen Sets in a Carton.



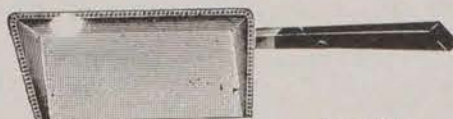
With Scraper.

No. 7—Brush Brass Finish \$30.00
No. 8—Nickel Plated 30.00



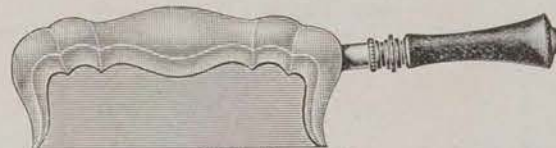
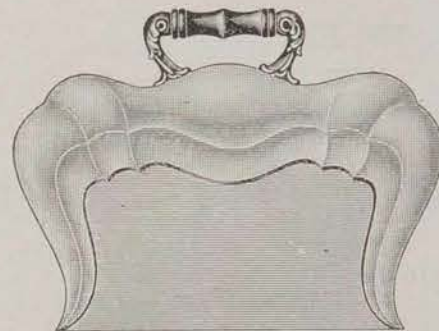
With Scraper.

No. 5—Brush Brass Finish \$30.00
No. 6—Nickel Plated 30.00



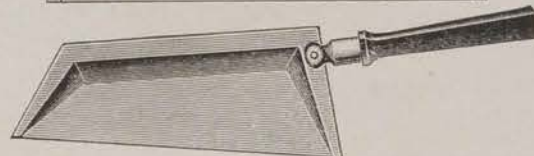
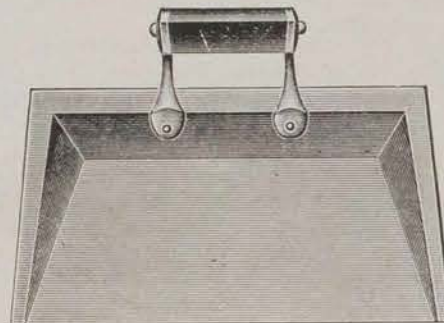
With Scraper, Ebony Handle.

No. 10S—Brush Brass Finish \$30.00
No. 11—Nickel Plated 30.00



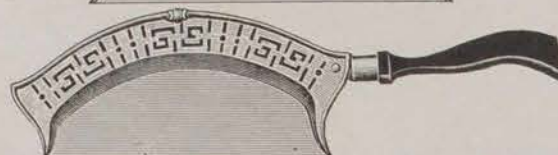
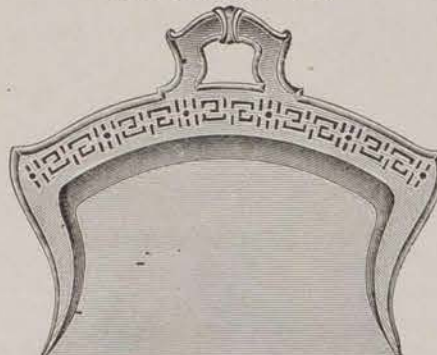
With Scraper.

No. 129N—Nickel Plated, Ebony Handle \$4.50
One Set in a Box.



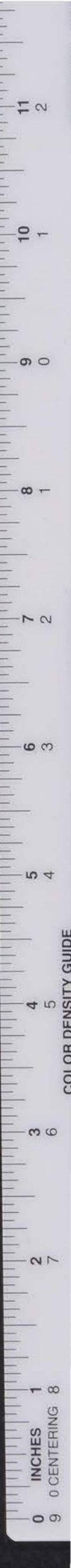
With Scraper.

No. 131N—Nickel Plated, Ebony Handles \$6.00
No. 131B—Brush Brass, Ebony Handles 6.00
No. 131C—Polished Copper, Ebony Handles 6.00
One Set in a Box.



With Scraper.

No. 134N—Nickel Plated, Ebony Handle \$6.00
No. 134B—Brush Brass, Ebony Handle 6.00
No. 134C—Polished Copper, Ebony Handle 6.00
One Set in a Box.





This book was digitized by the Rakow Research Library of the Corning Museum of Glass in May 2014.

For access to the original files, please contact the library at www.cmog.org/library