

Corning Glass Works
TC-57145 c2 R-800AM

*Eligible
House*

PYREX

OVENWARE • FLAMEWARE

BRAND

RETAIL PRICES EFFECTIVE JANUARY 1941



CORNING GLASS WORKS

CORNING, N. Y.

What you should tell your customers *about* **PYREX OVENWARE**

FLAKY CRUSTS EVERY TIME!



PYREX Ovenware possesses remarkable cooking qualities. Bottom pie crusts are brown and flaky—the kind that make your mouth water. Food bakes more quickly in PYREX Ovenware—saves fuel.

BAKE, SERVE AND STORE IN THE SAME DISH



One dish does the work of three. PYREX Ovenware is smart and dainty for table service—compact and safe in your refrigerator. Thrifty housewives use PYREX ware exclusively for all of their baking requirements.

NO CLINGING RANCID ODORS OR TASTE!



Smooth, clear, non-porous PYREX ware can't store up odors. Cook fish one day, onions another, meat pie the third—your PYREX ware dish washes sweet and clean as the day it was bought.

ACTUALLY WATCH FOODS COOK



Look through your transparent PYREX casserole and see just how that baked steak is cooking. Women everywhere are saying: "PYREX ware makes it easier to be a better cook."

NOTE: Marks in the body of this glass are incidental to the process of manufacture and are not in any way detrimental to the use of the ware.

"PYREX" is a registered trademark of Corning Glass Works, Corning, N. Y. It is your guarantee of fine craftsmanship.

INSTRUCTIONS

Following these simple rules will give a lifetime of service from PYREX brand Ovenware:

1. Use it in the oven not on top of the stove or next to flame.
2. When the dish is hot, handle with a dry cloth.
3. Do not pour water into hot dish.
4. Do not place hot dish on a wet table top, sink, or in water.

REPLACEMENT OFFER

Any dish or part of PYREX brand Ovenware which breaks from oven-heat within two years from date of purchase, may be replaced by any dealer in PYREX brand ware in exchange for the broken pieces.

THERE IS A SIZE FOR EVERY FAMILY

Number in Family	Capacity Recommended
2	1 Pint (2 cups)
3 or 4	1 Quart (4 cups)
5 or 6	1½ Quarts (6 cups)
7 or 8	2 Quarts (8 cups)

CLEANING

If food scorches in the dish, use 3 tablespoons of baking soda to a quart of warm water, let soak for half hour or longer, then wash with soap and hot water. Avoid using any gritty cleaning powders or pads.

GREASING

PYREX dishes should be generously greased as this lessens dish scrubbing. Put a little water or grease in a flameware dish before adding other foods as this shortens the time required for dish washing.

MINERAL DEPOSITS

To avoid mineral deposits from hard water, wash well with soap and hot water after each use. Stubborn mineral deposits may be removed by filling the dish half full of water, adding two tablespoonfuls of vinegar. After boiling for a few minutes, wash in soap and hot water, using a non-gritty cleaning powder.

Free Advertising and Display Materials Available to Progressive Dealers . .

FREE



CONSUMER FOLDER

A new four color consumer folder for mailing out with statements, etc. and for counter distribution.

Send your name and address for imprinting. No F-142-10-40

FREE



FOR LOCAL TIE-INS WE WILL

FURNISH FREE—MATS, ELECTROS, HALFTONES

Mats, electros, halftones of individual PYREX Ware items and sets to save you money in preparing your own newspaper or other printed advertisements. Line electros and mats available in miniature or 1 column size. Halftone Electros—120 line screen—available in 3-5/16" width only. 65 or 85 line screen electros or mats, in 1 column size only. Send for glossy prints if you wish to make your own electrotypes.

DO YOU USE RADIO ADVERTISING

Suggestions for Pyrex Ware radio announcements for use over your local station written by experienced radio writers.

FREE



COUNTER PRICE CARDS

Handy retail price list for you and your clerks gives complete information about entire PYREX Ware line. You should have some of these handy. Send for No. S-54-10-40

FREE



DEALER INVENTORY CARD, CHECK LIST AND ORDER CARD

Dealers inventory card keeps your sales record accurate. Dealers order card helps you make up new purchase order.

Inventory Card No. S-55-9-40
Order Card No. S-56-6-40

FREE



WINDOW AND COUNTER DISPLAYS TIMELY DISPLAY MATERIAL FOR PROGRESSIVE DEALERS

Cardboard inserts to dress up this display, pie plate racks and multicolored food inserts to show PYREX in use.

FOR THESE PROMOTIONAL HELPS SEND TO CORNING GLASS WORKS, CORNING, N. Y.

CASSEROLES • OPEN BAKERS

BAKE, SERVE AND STORE IN SAME DISH



CASSEROLES—ROUND—KNOB COVER

No.	U. S. Trade Size	Outside Dimensions in Inches	Pieces in Case	Weight Case Lbs.	RETAIL PRICE	
					Each	Case
621	1/2 qt.	6 x 2 1/4	12	21		
622	1 qt.	6 7/8 x 2 3/4	12	30	\$.40	\$4.80
623	1 1/2 qt.	7 7/8 x 3	12	34	.50	6.00
624	2 qt.	8 7/8 x 3 1/4	12	44	.65	7.80
626	3 qt.	10 3/8 x 3 1/2	6	31	.75	9.00
					.95	5.70

Keeps food piping hot. Modern Housewives rave about them.



CASSEROLES—OVAL—KNOB COVER

No.	U. S. Trade Size	Outside Dimensions in Inches	Pieces in Case	Weight Case Lbs.	RETAIL PRICE	
					Each	Case
632	1 qt.	8 x 5 7/8 x 2 7/8	6	14		
633	1 1/2 qt.	9 1/8 x 6 3/8 x 3	6	18	\$.50	\$3.00
634	2 qt.	10 1/8 x 7 1/2 x 3 1/4	6	23	.65	3.90
					.75	4.50

As a small roaster, for scalloped potatoes, tomatoes, etc.



CASSEROLES—ROUND UTILITY COVER

No.	U. S. Trade Size	Outside Dimensions in Inches	Pieces in Case	Weight Case Lbs.	RETAIL PRICE	
					Each	Case
682	1 qt.	6 7/8 x 2 3/4	12	27		
683	1 1/2 qt.	7 7/8 x 3	12	33	\$.50	\$6.00
684	2 qt.	8 7/8 x 3 1/4	12	43	.65	7.80
686	3 qt.	10 3/8 x 3 1/2	6	31	.75	9.00
					.95	5.70

A double purpose dish. Use cover for baking delicious pies. The flat covers save space in oven and refrigerator.



OPEN BAKERS—ROUND

No.	U. S. Trade Size	Outside Dimensions in Inches	Pieces in Case	Weight Case Lbs.	RETAIL PRICE	
					Each	Case
021	1/2 qt.	6 x 2 1/4	12	13		
022	1 qt.	6 7/8 x 2 3/4	12	18	\$.25	\$3.00
023	1 1/2 qt.	7 7/8 x 3	12	25	.35	4.20
024	2 qt.	8 7/8 x 3 1/4	12	28	.45	5.40
026	3 qt.	10 3/8 x 3 1/2	6	22	.55	6.60
					.65	3.90

These bakers are bottom parts of corresponding round Casseroles. Bakes and serves perfect meat pie, chowders and puddings.

PYREX OVENWARE

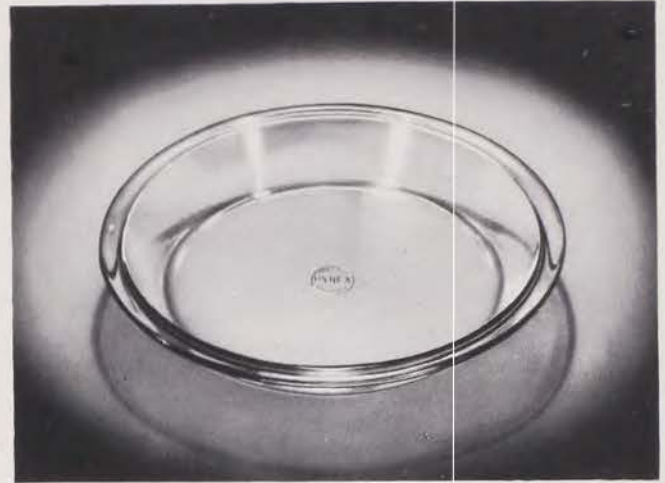
FOR FASTER BAKING



OPEN BAKERS—OVAL

No.	U. S. Trade Size	Outside Dimensions in Inches	Pieces in Case	Weight Case Lbs.	RETAIL PRICE	
					Each	Case
032	1 qt.	8 x 5 7/8 x 2 7/8	6	10	\$.35	\$2.10
033	1 1/2 qt.	9 1/8 x 6 5/8 x 3	12	26	.45	5.40
034	2 qt.	10 1/8 x 7 1/2 x 3 1/4	12	30	.55	6.60

These bakers are bottom parts of corresponding oval casseroles. Your foods browned on the bottom.



PIE PLATES

No.	Outside Dimensions in Inches	Pieces in Case	Weight Case Lbs.	RETAIL PRICE	
				Each	Case
*208	8 1/2 x 1 1/2	12	13	\$.20	\$2.40
*209	9 1/2 x 1 1/2	12	16	.25	3.00
*210	10 1/2 x 1 1/2	12	23	.30	3.60
*211	11 1/2 x 1 1/2	12	24	.35	4.20

*Bulk Packing

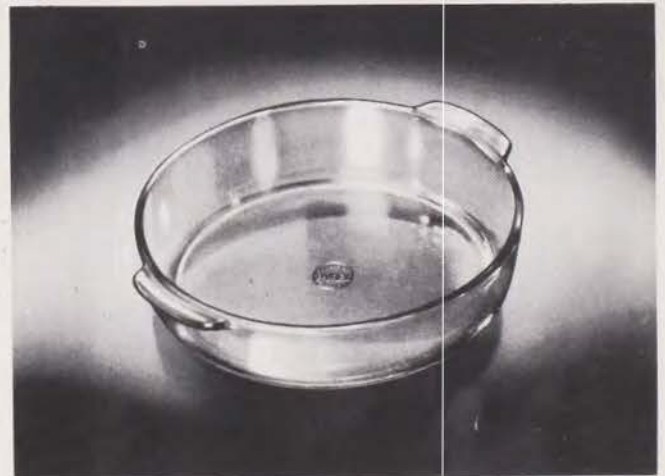
Pies taste better and look better baked in this pie plate. Transparent glass for faster baking and flakier crusts.



BREAD OR LOAF PANS

No.	Outside Dimensions in Inches	Pieces in Case	Weight Case Lbs.	RETAIL PRICE	
				Each	Case
212	9 1/8 x 5 1/8 x 2 7/8	12	29	\$.45	\$5.40
214	10 5/8 x 5 5/8 x 3 3/8	12	35	.65	7.80

A loaf pan with a reputation for delicious cakes, meats, or bread.



CAKE DISH

No.	Outside Dimensions in Inches	Pieces in Case	Weight Case Lbs.	RETAIL PRICE	
				Each	Case
221	8 5/8 x 2	12	23	\$.35	\$4.20

No. 624 Casserole Cover fits this dish.

When not in use for layer cakes, use it for baking or use two as a small roaster.

BAKE, SERVE AND STORE IN THE SEE WHAT YOU ARE COOKING



UTILITY DISHES

No.	Outside Dimensions in Inches	Pieces in Case	Weight Case Lbs.	RETAIL PRICE	
				Each	Case
231	10½ x 6½ x 2	12	37	\$.50	\$6.00
232	12½ x 8½ x 2	12	41	.65	7.80

A popular baking dish with a thousand uses for modern housewives everywhere.



REFRIGERATOR DISHES

No.	Outside Dimensions in Inches	Pieces in Case	Weight Case Lbs.	RETAIL PRICE	
				Each	Case
662	6 x 6 x 2	6	15	\$.35	\$2.10
663	6 x 6 x 3	6	17	.45	2.70

Space saving refrigerator dishes. Can be put directly into oven for warming left-overs.

PYREX PLATTERS FOR BAKING AND SERVING



PLATTER—OVAL

No.	Outside Dimensions in Inches	Pieces in Case	Weight Case Lbs.	RETAIL PRICE	
				Each	Case
316	15 x 11¾ x 7/8	3	12	\$1.65	\$4.95

Bake on this "PYREX" Platter and serve the food in it . . . right out of the oven . . . piping hot.



WELL AND TREE PLATTER

No.	Outside Dimensions in Inches	Pieces in Case	Weight Case Lbs.	RETAIL PRICE	
				Each	Case
372	15 x 11¾ x 7/8	3	13	\$1.85	\$5.55

Fine for fish and baked meats. Well and Tree design enables you to serve all the delicious gravy.

SAME SMART PYREX WARE DISH

COOK IN CLEAN SPARKLING PYREX WARE



CUSTARD CUPS—SHALLOW

No.	U. S. Trade Size	Outside Dimensions in Inches	Pieces in Case	Weight Case Lbs.	RETAIL PRICE	
					Each	Case
*414	4 oz.	3 1/2 x 1-11/16	48	13	\$.05	\$2.40

*Cell Packing

For baking custards, individual souffles and scalloped dishes, popovers and many other uses.



CUSTARD CUPS—DEEP

No.	U. S. Trade Size	Outside Dimensions in Inches	Pieces in Case	Weight Case Lbs.	RETAIL PRICE	
					Each	Case
*425	5 oz.	3 1/8 x 2 3/8	48	16	\$.05	\$2.40
*426	6 oz.	3 3/8 x 2 5/8	72	30	.10	7.20

*Cell Packing

For heating and serving baby's vegetables and cereals. For storing left-overs in refrigerator.



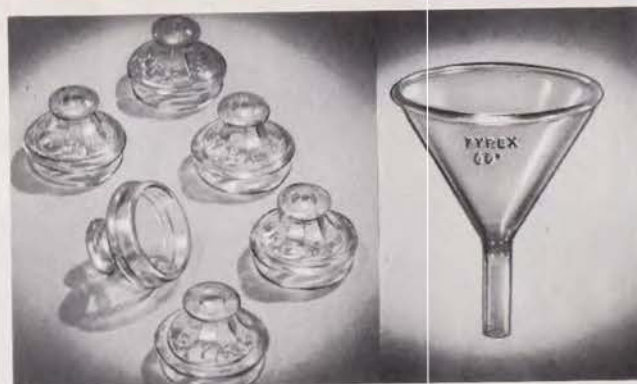
INDIVIDUAL DEEP PIE DISHES

No.	U. S. Trade Size	Outside Dimensions in Inches	Pieces in Case	Weight Case Lbs.	RETAIL PRICE	
					Each	Case
*453	8 oz.	4 1/2 x 1 3/4	24	12	\$.10	\$2.40
*455	12 oz.	5 1/8 x 1 7/8	24	16	.15	3.60

*Cell Packing

Ideal for deep dish apple pies and meat or chicken pies. Makes even bread pudding a treat.

PYREX UTILITY ITEMS



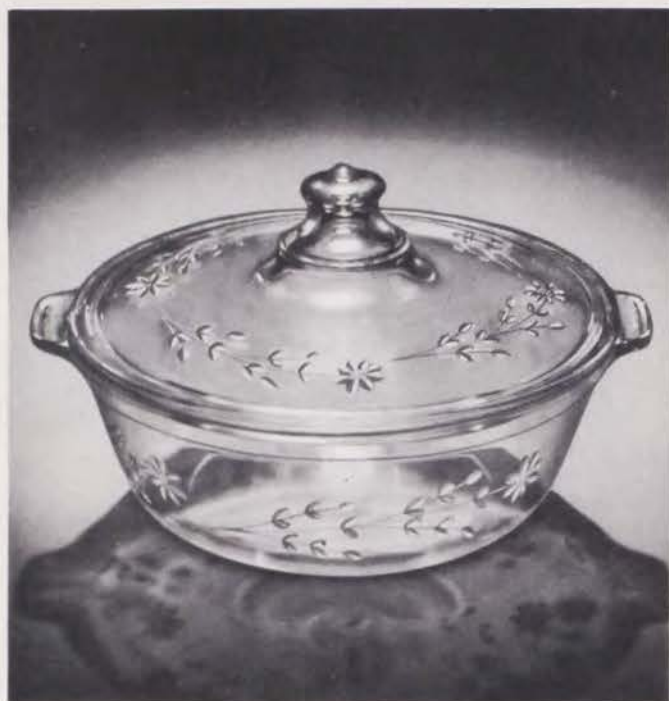
No.		Outside Dimensions in Inches	Pieces in Case	Weight Case Lbs.	Retail Price	
					Each	Case
*853	Percolator Tops	Dia. 2 1/8	48	8	\$.05	
*596	Funnel	3	12	4		.25

Percolator Tops Packed 12 to a Card, 4 Cards to the Case.

*Funnel Cell Packing

Percolator Tops fit most standard percolators. Funnels are handy for filling baby bottles.

Engraved and Decorated Ware



ENGRAVED WARE

Attractive engraved design available on 20 pieces.

No.	Description	RETAIL	PRICE
		Complete Item Engraved Style E2	Cover Engraved Body Plain Style E7
81	1 Cup Engraved Teapot	\$1.35	
84	6-cup Engraved Teapot	1.95	
209	9 1/2" Engraved Pie Plate	.55	
212	9 1/8" Engraved Bread or Loaf Pan	.80	
221	8 3/8" Cake Dish	.60	
231	10 1/2" Engraved Utility Dish	.90	
232	12 3/8" Engraved Utility Dish	1.15	
316	15" Engraved Platter—Oval	2.50	
372	15" Engraved Well and Tree Platter	2.35	
414	4 ciz. Engraved Custard Cups—Round—Shallow	.15	
622	1 qt. Engraved Casserole—Round—Knob Cover	1.00	\$.70
623	1 1/2 qt. Engraved Casserole—Round—Knob Cover	1.20	.85
624	2 qt. Engraved Casserole—Round—Knob Cover	1.45	1.05
626	3 qt. Engraved Casserole—Round—Knob Cover	1.65	1.25
632	1 qt. Engraved Casserole—Oval—Knob Cover	1.00	.70
633	1 1/2 qt. Engraved Casserole—Oval—Knob Cover	1.20	.85
634	2 qt. Engraved Casserole—Oval—Knob Cover	1.45	1.05
683	1 1/2 qt. Engraved Casserole—Round—Utility Cover	1.20	.85
684	2 qt. Engraved Casserole—Oval—Utility Cover	1.45	1.05
686	3 qt. Engraved Casserole—Round—Utility Cover	1.65	1.25

ENGRAVED GIFT SET

245	11 piece Engraved Gift Set	4.95
-----	----------------------------	------

For Data on Packing and Weight See Corresponding Items in Plain PYREX Ware. Always Specify Style E2 or E7.

PYREX BRAND COVERS

Your customers will welcome the suggestion that they use round Pyrex Brand Casserole Covers on their metal sauce pans.



COVERS ONLY

Cover For No.	Diameter Flange to Flange	Description	Pieces in Case	Weight Case Lbs.	RETAIL PRICE	
					Plain	Engraved
621	5 3/8 in.	1 pt. Round Casserole	12	11	\$.20	\$. . .
622	6 1/4 in.	1 qt. Round Casserole	12	14	.25	.45
623	7 1/8 in.	1 1/2 qt. Round Casserole	12	17	.30	.55
624	8 1/8 in.	2 qt. Round Casserole	12	21	.35	.65
632		1 qt. Oval Casserole	12	14	.25	.45
633		1 1/2 qt. Oval Casserole	12	17	.30	.55
634		2 qt. Oval Casserole	12	21	.35	.65
682	6 1/4 in.	1 qt. Utility Casserole	12	12	.25	. . .
683	7 1/8 in.	1 1/2 qt. Utility Casserole	12	14	.30	.55
684	8 1/8 in.	2 qt. Utility Casserole	12	16	.35	.65
686	9 1/2 in.	3 qt. Utility Casserole	12	20	.45	.85

COMPLETE NEW LINE OF... PYREX MEASURES

ALL RED MARKED



MEASURING CUP—LIQUID—32 oz.

No.	U. S. Trade Size	Pieces in Case	Weight Case Lbs.	RETAIL PRICE	
				Each	Case
532	32 oz.	6	15	\$.75	\$4.50

Especially fine for baby feedings. In demand by amateur photographers.



MEASURING CUP—LIQUID—16 oz.

No.	U. S. Trade Size	Pieces in Case	Weight Case Lbs.	RETAIL PRICE	
				Each	Case
516	16 oz.	6	13	\$.50	\$3.00

Every housewife should have this handy size.



MEASURING CUP—LIQUID—8 oz.

No.	U. S. Trade Size	Pieces in Case	Weight Case Lbs.	RETAIL PRICE	
				Each	Case
* 508	8 oz.	12	11	\$.15	\$1.80

The famous fast selling "PYREX" measuring cup with improved lip and red markings.

Note how easy it is to read Red Markings on enlarged picture below.



MEASURING CUP—LEVEL FULL—8 oz.

No.	U. S. Trade Size	Pieces in Case	Weight Case Lbs.	RETAIL PRICE	
				Each	Case
* 18	8 oz.	12	8	\$.15	\$1.80

For dry measure use. "A cup full is a cupful!"

PYREX BRAND GLASS INSURES TRUE



CRYSTAL TEAPOT—INDIVIDUAL

No.	Size	Pieces in Case	Weight Case Lbs.	RETAIL PRICE	
				Each	Case
81	1 Cup	6	8	\$1.00	\$6.00
81B	Bowl Only	6	7	.50	3.00
81C	Cover Only			.35	
81H	Handle Only			.20	
81MB	Metal Band			.20	

Serves one or two cups. Glass lock-on cover and ebony black handle.

What you should ABOUT PYREX

Tastes Better!

Experts everywhere agree that tea and coffee taste better brewed in glass. With PYREX Ware, tea and coffee retain all their natural flavor.

Clean!

Smooth clean PYREX Brand glass cannot absorb odors and contaminate flavor — no more disagreeable "coffee pot" taste.



PLATINUM BANDED TEAPOT—6 CUP

No.	Size	Pieces in Case	Weight Case Lbs.	RETAIL PRICE	
				Each	Case
84 D-1	6 Cups	6	12	\$1.95	\$11.70
84 D-1-B	Bowl Only	6	11	1.20	7.20
84 D-1-C	Cover Only			.45	
84 D-1-H	Handle Only			.25	
84 D-1-MB	Metal Band			.25	

The decorative bandings make this teapot look particularly attractive on a serving tray.



CRYSTAL TEAPOT—6 CUP

No.	Size	Pieces in Case	Weight Case Lbs.	RETAIL PRICE	
				Each	Case
84	6 Cups	6	12	\$1.49	\$8.94
84B	Bowl Only	6	11	.75	4.50
84C	Cover Only			.35	
84H	Handle Only			.25	
84MB	Metal Band			.25	

Watch it brew. Glass lock-on cover and ebony black handle.

RICH TEA AND COFFEE FLAVORS

tell your customers
BEVERAGE MAKERS

Watch It Brew!

See your tea or coffee brewed to your individual taste.

Smart Design!

Dainty and attractive for service directly on your dinner table.

Easy to Clean!

Washing is easy with PYREX Ware.

INSTRUCTIONS

Follow these simple rules for a lifetime of service from your PYREX Brand tea and coffee makers:

1. Use moderate to low heat.
2. Add water before placing over flame or electric element.
3. Don't boil dry.
4. Set hot percolator on dry surfaces only.
5. Use care in washing and handling.

REPLACEMENT OFFER

Any glass part of a PYREX Brand Teapot or percolator which breaks from heat within one year from date of purchase, when used according to instructions, may be replaced by any dealer in PYREX Brand Ware in exchange for the broken pieces.



FLAMEWARE PERCOLATOR—6 CUP

No.	Description	Size	Pieces Weight		RETAIL PRICE	
			in Case	Case Lbs.	Each	Case
7826	Percolator	6 Cups	6	23	\$2.45	\$14.70
7866	Pitcher and Cover (Without Coffee Basket Assembly)	(1½ Qt.)	6	10	1.65	9.90
7826B	Bowl Only	6 Cups	6	15	1.25	7.50
7826C	Cover Only				.25	
7826H	Handle Only				.25	
7826P	Glass Pump Only				.45	
7826CB	Aluminum Coffee Basket				.25	
7826MB	Stainless Steel Band Only				.25	

Makes delicious coffee every time. Attractive, durable, economical. Doubles as asparagus cooker.

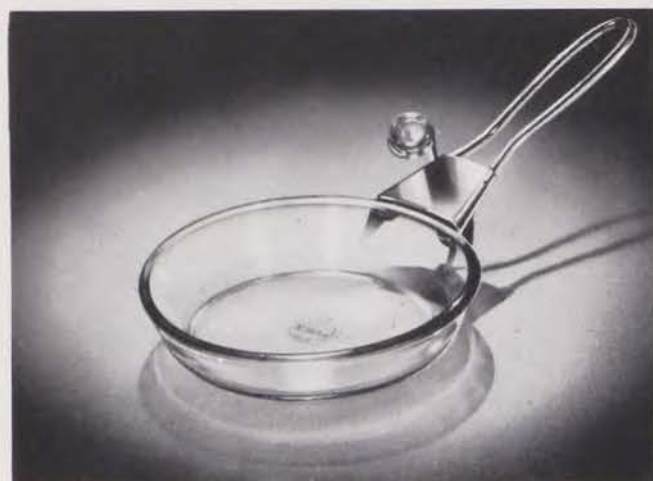


FLAMEWARE PERCOLATOR—9 CUP

No.	Description	Size	Pieces Weight		RETAIL PRICE	
			in Case	Case Lbs.	Each	Case
7829	Percolator	9 Cups	4	21	\$3.45	\$13.80
7889	Pitcher and Cover (Without Coffee Basket Assembly)	(2½ Qt.)	4	16	2.35	9.40
7829B	Bowl Only	9 Cups	4	11	1.60	6.40
7829C	Cover Only				.35	
7829H	Handle Only				.30	
7829P	Glass Pump Only				.45	
7829CB	Stainless Steel Coffee Basket				.55	
7829MB	Stainless Steel Band Only				.30	

Largest "PYREX" percolator. Glass and metal handle, never burns or chars. Glass pump.

MODERN UTENSILS FOR



FLAMEWARE SKILLET—WITH CHROME HANDLE

No.	Description	U. S. Trade Size	Outside Dimensions in Inches	Pieces in Case	Weight Case Lbs.	RETAIL PRICE	
						Each	Case
6817	Skillet	1 pt.	7x1½	6	12	\$.90	\$5.40
6817B	Bowl Only			12	15	.50	6.00
6817H	Chrome Handle Only					.45	

No. 622 Casserole Cover Fits This Skillet

Handy breakfast special. For eggs and bacon. It's easy to use and clean; always looks like new.



FLAMEWARE COVERED SAUCEPANS—WITH LIP

No.	U. S. Trade Size	Outside Dimensions in Inches	Pieces in Case	Weight Case Lbs.	RETAIL PRICE	
					Each	Case
6322	1 qt.	6 Wide x 3½ High	4	12	\$1.65	\$6.60
6323	1½ qt.	7¼ " x 3¾ "	4	14	1.95	7.80
6324	2 qt.	7¼ " x 4¾ "	4	17	2.25	9.00
6322B	1 qt.	Saucepan Bowl	6	12	.80	4.80
6323B	1½ qt.	Saucepan Bowl	6	14	1.00	6.00
6324B	2 qt.	Saucepan Bowl	6	15	1.20	7.20
6322C	1 qt.	Saucepan Cover			.30	
6323C	1½ qt.	Saucepan Cover			.35	
6324C	2 qt.	Saucepan Cover			.35	
6322H	{ Saucepan Handle				.50	
6323H						
6324H						
6322MB	{ Saucepan Metal Band and Sleeve				.35	
6323MB						
6324MB	{ Saucepan Metal Band and Sleeve				.40	

These all glass saucepans will let you see what you cook, make your dish washing easy. Especially fine for foods that tend to stain other cooking ware! Wide flat bottoms, easy pouring lips, lock on covers and removable handles.

What you should ABOUT PYREX

SAVES TIME

Use this one dish for cooking over the flame—serving—storing—re-heating.

EASY TO KEEP CLEAN

Smooth surfaces, rounded corners, both inside and out. Does not permanently discolor.

FOODS TASTE BETTER

These all-glass utensils are especially fine for foods that tend to stain other cooking ware. Does not absorb other food odors.

SEE WHAT YOU COOK

No burning. No boiling dry. Watch food cook to perfection through beautiful clear glass.

TOP-OF-STOVE COOKING

tell your customers

FLAMEWARE

INSTRUCTIONS

1. PYREX Flameware absorbs heat very rapidly and efficiently. Use very moderate heat, low gas flames, or low electric power. Medium gas flame or electric heat may be used to start food to boil, but when boiling begins the heat should be turned low.

2. Always put water, or food in dish before heating. Don't boil dry or allow foods to burn or stick. Boiling dry or charring foods in the dish may cause breakage later. Excessive sticking of food in a PYREX dish indicates the use of too much heat. Adding water to a saucepan before putting in the vegetables or occasional stirring as the food comes to a boil lessens any tendency for the food to stick.

3. In making gravy, remove PYREX dish from direct heat and allow to cool for a minute or so before adding liquid to the hot dish.

Excessive sticking of food in a PYREX dish indicates the use of too much heat. Adding water to a saucepan before putting in the vegetables and occasional stirring as the food comes to a boil lessens any tendency for the food to stick to the dish. Save food and reduce the time required for dish washing.

4. Set hot dishes on dry surfaces only, use dry cloth when handling.

5. Do not heat food in cans or bottles set in water in a PYREX dish where the water between the bottom of the can or bottle and the dish can be boiled away permitting the PYREX dish to overheat in one spot.

REPLACEMENT OFFER

Any glass part of a PYREX Brand Flameware dish which breaks from heat within one year from date of purchase, when used according to instructions, may be replaced by any dealer in PYREX Brand Ware in exchange for the broken pieces.

FLAMEWARE DOUBLE BOILERS

No.	U. S. Trade Size	Outside Dimensions in Inches	Pieces in Case	Weight Case Lbs.	RETAIL PRICE	
					Each	Case
6762	1 qt.	6 1/2 wide x 7 1/2 high	4	21	\$3.45	\$13.80
6763	1 1/2 qt.	6 1/2 wide x 8 1/4 high	4	22	3.95	15.80
6762C	Cover Only				.30	
6763C	Cover Only				.35	
6762U	Upper Bowl Only		6	11	.85	5.10
6763U	Upper Bowl Only		6	11	1.05	6.30
6762B	Lower Bowl Only		6	12	1.00	6.00
6763B	Lower Bowl Only		6	12	1.20	7.20
6762H	{ Glass Handle Only—(Single)				.50	
6763H	{					
6762MB	Metal Band and Sleeve				.35	
6763MB	Metal Band and Sleeve				.35	

The last word in double boilers. No kitchen can be up-to-date without one. Perfect sauces every time. Fine for 7 minute icings. Easy to watch water level and see what you are cooking. Removable handles.



FLAMEWARE UTILITY TEA-KETTLE

No.	U. S. Trade Size	Outside Dimensions in Inches	Pieces in Case	Weight Case Lbs.	RETAIL PRICE	
					Each	Case
7125	2 1/2 qt.	8 wide x 7 high	4	19	\$2.95	\$11.80
7125B	Bowl Only		4	13	2.00	8.00
7125C	Cover Only				.25	
7125H	Glass Handle Only				.40	
7125MB	Metal Band and Sleeve for Handle				.40	

A tea-kettle that can't rust or tarnish and will stay looking new for years. Use as a pitcher for iced tea or cocoa. Cooks and serves soup, corn-on-cob, asparagus.



PYREX WARE • PRACTICAL GIFT



17-PIECE "HOME-BAKER" SET

No.	Pieces in Sets	Sets in Case	Weight Case Lbs.	RETAIL PRICE	
				Set	Case
295	17	1	18	\$2.95	\$2.95

Contents: One each 8 oz. Level-Full Measuring Cup with permanent red graduations; 12 $\frac{5}{8}$ " Utility Dish; 9 $\frac{1}{8}$ " Loaf Pan; 9 $\frac{1}{2}$ " Pie Plate; Handy Wire Rack; Two 8 $\frac{3}{8}$ " Cake Dishes; Four 8 oz. individual Deep Pie Dishes; Six 4 oz. Custard Cups.

Every piece selected by a Home Economist for the modern housewife. Here is a set designed to meet 90% of your consumer baking needs.



11-PIECE GIFT SET

No.	Pieces in Set	Sets in Case	Weight Case Lbs.	Each Plain	RETAIL PRICE	
					Each Engraved	Case Plain
245	11	1	14	\$2.45	\$4.95	\$2.45

CONTENTS

Contents: One each 1 $\frac{1}{2}$ qt. Casserole; 10 $\frac{1}{2}$ " Utility Dish; 8 $\frac{1}{2}$ " Pie Plate; 9 $\frac{1}{8}$ " Loaf Pan; 8 $\frac{3}{8}$ " Cake Dish with handles; Six 4 oz. Custard Cups.

Packed in Silver and Blue gift box—a lovely wedding present.

*The modern gift women every place will want.
A lovely wedding or holiday present.*



8-PIECE MATCHED SET

No.	Pieces in Sets	Sets in Case	Weight Case Lbs.	RETAIL PRICE	
				Set	Case
145	8	6	34	\$1.00	\$6.00

Contents: 1—1 $\frac{1}{2}$ qt. Casserole with Pie Plate Cover, and 6—5 oz. Dainty Custard Cups, in matched design in an attractive gift box.

Designed particularly to go with the dainty cups, this smart casserole is available only in the Matched Set.



CUSTARD CUP SET

No.	Pieces in Sets	Sets in Case	Weight Case Lbs.	RETAIL PRICE	
				Set	Case
59	7	12	25	\$.59	\$7.08

6—5-oz. Dainty Custard Cups and a Handy Wire Rack.

With the wire rack these dainty thin cups make a perfect muffin pan.

SETS FOR EVERY OCCASION



10-PIECE "SERVICE" SET

No.	Pieces in Sets	Sets in Case	Weight Case Lbs.	RETAIL PRICE	
				Each	Case
129	10	6	45	\$1.29	\$7.74

Contents: One each 8 oz. Level-Full Measuring Cup with permanent red graduations; 9 1/2" Pie Plate; 1 1/2 qt. Casserole 2 pieces, Pie Plate Cover; Six 4 oz. Custard Cups.

Here is a real service value, up to date, every piece has many uses. Packed in a gift container.



9-PIECE "ECONOMY" SET

No.	Pieces in Sets	Sets in Case	Weight Case Lbs.	RETAIL PRICE	
				Each	Case
179	9	6	28	\$.79	\$4.74

Contents: 1 each 9 1/2" Pie Plate, 8-oz. levelful Measuring Cup with permanent red graduations, and six 4-oz. Custard Cups with handy Wire Rack.

A real value in all glass baking ware. Packed in an attractive new gift box.



"HANDI-KIT" SET

No.	Pieces in Sets	Sets in Case	Weight Case Lbs.	RETAIL PRICE	
				Set	Case
445	6	12	19	\$.39	\$4.68

6—5-oz. Dainty Custard Cups.

Fine for custards, baby feedings, baking and storing. Beautiful on the dinner table.

CASH IN ON GIFT SALES

PYREX Gift Sets are welcome gifts for all occasions! Progressive dealers carry full stocks and display these PYREX Sets in their attractive packages. Make your store the headquarters for PYREX Ware gifts for weddings, anniversaries, showers, bridge parties!

Feature PYREX Sets in Your Window to
Build Store Traffic!

THIS DISPLAY SOLD OVER \$10,000 WORTH OF PYREX WARE

RAKOW RESEARCH LIBRARY

1 000108750



It's easy to build this display table. If you are interested, write Sales Promotion Dept., CORNING GLASS WORKS, Corning, N. Y. for blueprints and complete specifications.

WHY IT PAYS YOU TO PROMOTE PYREX WARE!

1. PRICE PROTECTED

You can make a full profit on PYREX Brand Ware. Retail prices are protected under Fair Trade laws in all states having this legislation.

2. NATIONAL ADVERTISING

Selling messages in most national publications pre-sell your customers. PYREX Ware is the leader in the field. Promote the leader.

3. FREE ADVERTISING HELPS

Mats and radio continuities are available for use in local advertising. Tie-in, this easy way, with national advertising.

4. FREE WINDOW DISPLAYS

Free seasonal display material is offered to progressive dealers to increase store traffic and store sales.

5. FREE COUNTER DISPLAYS

Counter cards and displays are available to dealers who appreciate the value of point-of-sale display material.

HOW YOU CAN MAKE MORE PROFITS

Progressive Dealers Everywhere Are Buying in 10 Case Lots or More.

This means:—

1. LARGER DISPLAYS

PYREX ware well displayed means greater sales. Volume buying is profitable buying.

2. LARGER SALES

Tests prove that dealers who display and feature more PYREX ware—sell more PYREX ware!

3. LARGER PROFITS

Dealers who buy in 10 case lots, make greater Fair Trade protected profits.

YOUR PYREX WARE BUSINESS IS JUST WHAT YOU MAKE IT!